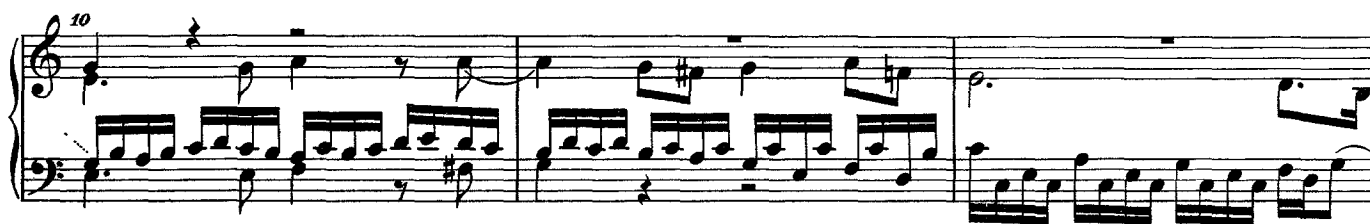


Канцона C-dur

(BuxWV 166)

Д.Букстехуде



This image displays a musical score for an organ piece by Dietrich Buxtehude, spanning measures 20 to 40. The score is written for two staves: the upper staff in treble clef and the lower staff in bass clef. The music is in a 3/4 time signature. Measures 20-24 show a melodic line in the right hand with some grace notes and a steady bass line. Measure 25 marks the beginning of a section with a more active right hand. Measures 26-29 continue this pattern. Measure 30 is marked with a '30' and a fermata-like symbol, indicating a change in the right hand's texture. Measures 31-34 feature a dense, rhythmic texture in the right hand, consisting of repeated chords and eighth notes. Measures 35-39 continue this dense texture. Measure 40 concludes the section with a final cadence in the right hand and a sustained bass line.

Musical score for organ, measures 45-80. The score is written in G major and 3/4 time. It consists of seven systems of two staves each (treble and bass clef). Measure numbers 45, 50, 55, 60, 65, 70, 75, and 80 are indicated at the beginning of their respective systems. The music features a variety of textures, including single-note lines, chords, and dense sixteenth-note passages. Performance markings include *(Ped.)* at measure 70 and *(Man.)* at measure 75. A fermata is present over the final chord of measure 80.

Musical score for organ, measures 85-105. The score is written for two staves (treble and bass clef). It features complex rhythmic patterns, including sixteenth and thirty-second notes, and rests. Measure numbers 85, 90, 95, 100, and 105 are indicated. A pedal instruction "(Ped.)" is present at the bottom left of the final system.